



**Central Queens Branch of the Prince Edward Island Wildlife Federation  
Renewed West River Atlantic Salmon Habitat Management Strategy**

Prepared by Knowlton Parkman and Isaac Arsenault-Saunders

2025

## Atlantic Salmon Habitat Management Plan for West River

### Table of Contents

<b>1.0 Introduction</b>	<b>3</b>
1.1 History of the watershed & Purpose of the project	3
1.2 Indigenous History to PEI	3
1.3 Forming a Habitat Management Plan	3
<b>2.0 Overview and Description of Watershed</b>	<b>4</b>
<b>3.0 Monitoring Programs</b>	<b>6</b>
<b>4.0 Habitat Requirements</b>	<b>11</b>
4.1 Spawning and Egg Incubation	12
4.2 Juvenile Rearing Habitat	12
4.3 Migratory corridor	12
<b>5.0 Threats to Salmon</b>	<b>13</b>
5.1 Climate Change	13
5.3 Fish Kill Events	14
5.5 Invasive Species	14
<b>6.0 Action Plans</b>	<b>15</b>
6.1 Riverdale	15
6.2 Howells’s Brook	17
6.3 Brookvale	20
6.4 Quinn’s Brook	23
6.5 Green Bay	25
6.6 Gass’ Brook	27
<b>7.0 Potential Sources of Funding for Atlantic salmon projects:</b>	<b>30</b>
<b>8.0 References/Technical documents</b>	<b>30</b>
<b>9.0 Appendix</b>	<b>31</b>

## **1.0 Introduction**

### **1.1 History of the watershed & Purpose of the project**

From 2005 – 2007, a watershed management plan (WMP) was developed by the Central Queens Wildlife Federation, with help from numerous local residents and stakeholders (see West River Watershed Management Plan 2008). The PEI Wildlife Federation has been in existence for over a century and branches such as Central Queens have been driving forces in watershed planning and ecosystem management. Details about the overall objectives and long-term planning can be found in the WMP, but essentially the Wildlife Federation hopes to encourage good land stewardship within the drainage basin and restore and enhance wildlife habitat both within watercourses and in their adjacent riparian buffer zones.

The Central Queens Branch of the PEI Wildlife Federation (CQWF) has been actively managing the West and Clyde Rivers in Queens County PEI and has made considerable progress in restoring watershed integrity from many aspects. CQWF has transformed sections of the river that had very little productivity for Atlantic salmon into areas that now have seen a salmon return to spawn and now support local populations. In several areas over the last ten years, by following a strategic approach, limiting factors were addressed and a major habitat transformation occurred (Curley's property in Brookvale is a good example). The purpose of this report is to focus on the limiting factors and description of the freshwater portion of the Atlantic salmon's life cycle on the West River.

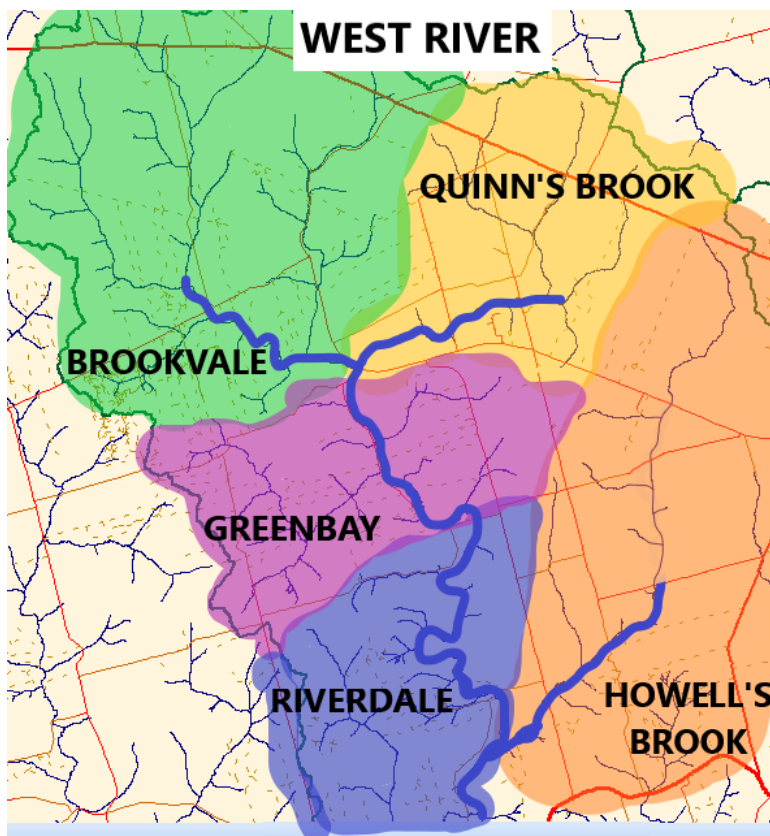
### **1.2 Indigenous History to PEI**

Indigenous people living on the land now known as Prince Edward Island are the Mi'kmaq, who have lived in Mi'kma'ki, traditional Mi'kmaq territory, for at least 12,000 years. They are the only people Native to PEI. The Mi'kmaq originally named PEI as 'Epekwitk', meaning "lying in the water". The Mi'kmaq lived in an annual cycle of seasonal movement between living in dispersed interior winter camps and larger coastal communities during the summer (Indigenous Canada). The name Ji'ka'we'katik is now the name of the main trail in the Bonshaw Hills Provincial Park and means "the place where bass are plentiful", which is the traditional Mi'kmaq name for the West River.

### **1.3 Forming a Habitat Management Plan**

When managing any species, the basic fundamentals for a species to thrive need to be understood and related to current and historical habitat usage within an area. The history and current habitat usage by a species will play a key role in identifying areas of habitat restoration efforts. To begin the planning process certain questions must be answered: how many salmon are returning during each spawning season, what is the juvenile survival rate/densities, what areas are currently being used to support certain life stage aspects, what is different about the current habitat usage compared to historical usage? The first step in improving or restoring local salmon populations must begin with identifying what the current situation is, recent watershed restoration efforts, ongoing issues, and current knowledge of species abundance. In this report, a structured approach will be implemented

when all current and historical factors are considered to address certain life stage limiting factors that when relieved will help increase local populations in an efficient and effective manner.



**Figure 1.** The West River watershed drainage area is separated based on geographic orientation and major tributaries with areas utilized historically and currently by Atlantic salmon highlighted in bold blue.

## 2.0 Overview and Description of Watershed

The West River drainage basin is the third largest watershed on Prince Edward Island (PEI), draining 20,525 ha of land and supporting more than 320 km of stream. The bulk of the West River drains from the Bonshaw Hills and many of the streams have above average gradients when compared to other watercourses on PEI. The river is heavily spring-fed, which moderates seasonal water temperatures and flows.

For the purpose of this report, the West River will be divided into management zones based on stream channel morphological (main river) and geographic separation (tributaries). The watershed can be divided into five (5) sub-watersheds or tributaries, which currently support local salmon populations and include: Brookvale (including Skye Brook), Quinn's Brook, Howell's Brook, and the main West River can be broken into two sections: Riverdale / Green Bay. About 52% of the upper watershed is under forest cover, 42% in agriculture, and about 4.5% developed. However, in each sub-watershed, the proportion of forested land can vary considerably. For example, Black Brook subwatershed is 70% forested, while Quinn's Brook has a mere 27% under forest cover.

The Riverdale section of the West River is the lower section of the main branch, which begins at Crosby's Pond (just above head-of-tide) and up to Green Bay (~8.5 km of the river). This section of the river contains the bulk of salmon habitat and population. This area contains the majority of salmon spawning habitat and juvenile rearing habitat and is a relatively productive habitat. It contains the Riverdale "Horseshoe", which is considered an old-growth forest. The remaining riparian habitat is mature forest and is almost entirely protected below the Bolger Park Road as it is a part of the Bonshaw Hills Provincial Park. Black Brook tributary also enters above Crosby's Pond and does not have local salmon populations.

Above the Riverdale area, still on the main branch of the river is the Green Bay section. There is a major transition of forest cover at one point, shifting from a mature forest cover in the Riverdale reach to dense alder growth as you enter the Green Bay area. The stream channel follows the shift in forest cover; where the forest cover is full and mature the meander is slower and more gentle, while in the dense alder growth areas the meander is tighter turning and more inconsistent. The sediment bedload in this section is considerably higher when compared to the lower Riverdale reach. CQWF has recently covered this entire reach thinning out the alders and constructing brush mats to help address the sediment issue. The sediment bedload is the greatest limiting factor in this reach of the river.

The Quinn's Brook sub-watershed includes several kilometers of varying gradient stream below Carragher's Pond, the pond itself, and three high-gradient but relatively short reaches of the stream above. In recent years Atlantic salmon have spawned along a 200m section below Carragher's Pond and this area will be a priority for protection. The riparian buffer zone is mostly intact and there are several areas of mature riparian forest. In the past, however, soil eroded from a small number of steep fields and roadways, resulting in sediment reaching this brook. A few gullies persist, although farming practices have improved in recent years. Salmon redds were last detected in 2014 below Carragher's Pond, but recently during electrofishing surveys, juveniles were found. The juveniles found were likely the result of the Bluefield High School Fish Friends Program where students raised and released Atlantic salmon from 2019 to 2021.

Howell's Brook sub-watershed was historically described as the best Atlantic salmon habitat on the West River. Today, while a few salmon continue to spawn in the lower reaches, most of the brook (above Peters Rd) is heavily choked with sediment and excessive alder growth. Major progress has been made in such alder choked areas in recent years. A 700m section above the Wynn road has made remarkable progress since 2016; starting as an oozing flow through excessive alder growth and now has a meandering, free-flowing channel with spawning substrates beginning to reappear. A strategically placed sediment trap above Peter's Road captures mobile sediment released during restoration activities, protecting habitat downstream.

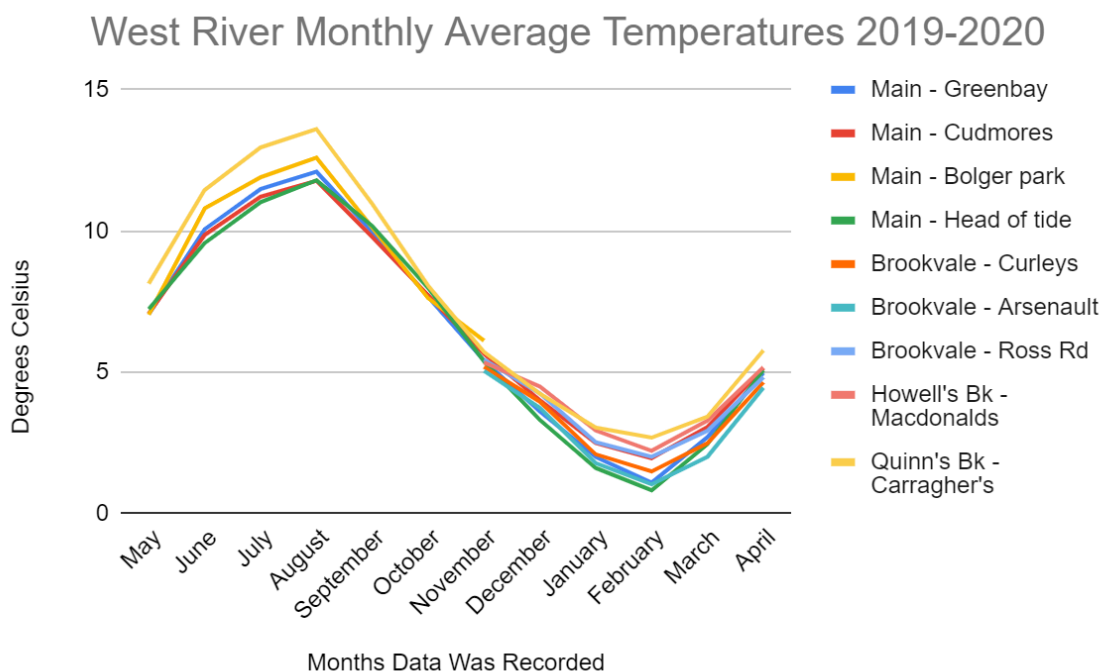
The uppermost area of the West River is the Brookvale area and contains several tributaries. Each stream reach has different in-stream and riparian zone habitat dependent upon gradient, deforestation, and land use activities. The Brookvale sub-watershed has a low gradient immediately upstream from Route 13. This 1 km zone was heavily inundated with alders, both in and along the stream prior to 2010. Excessive sediment deposition occurred in the reaches with dense alders. Upstream from the "flat" reach, the gradient increases. Other than attempting to "fix" roadway or agricultural input problems, most activity will be focused on in-stream alterations to improve juvenile trout and salmon habitat. The riparian zone quality in these reaches varies but often many of the

desirable tree species are present. These upper reaches of the West River should be prime production areas for salmonids because of water quality, but basic ingredients (spawning gravel, easy movement, appropriate cover, etc.) are often lacking. The removal of sediment just upstream from Route 13 should afford protection for all the important downstream river reaches where trout and salmon spawn. Salmon redds were detected for the first time in decades in 2018 and 2019 and are considered a major success as this is a direct result of following a strategic restoration plan with suitable actions.

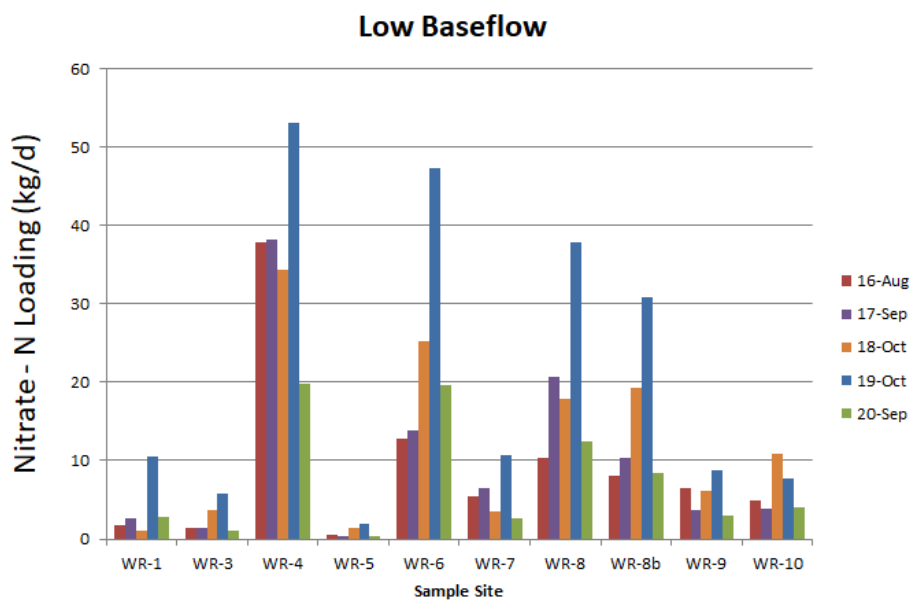
### 3.0 Monitoring Programs

**Water temperature:** Temperature data loggers were installed at 9 sites throughout the West River to monitor annual temperature regimes in 2019 and 2020 (Figure 6). Gaps in data in Figure 2 were because in 2020 there was one logger that went missing and another two loggers stopped working. The highest recorded temperature for 2020 was 18.4 degrees Celsius on August 14th. The highest recorded temperature for 2019 was 16.9 degrees Celsius on July 30. Figure 2 displays the monthly temperature average from May 2019 to April 2020.

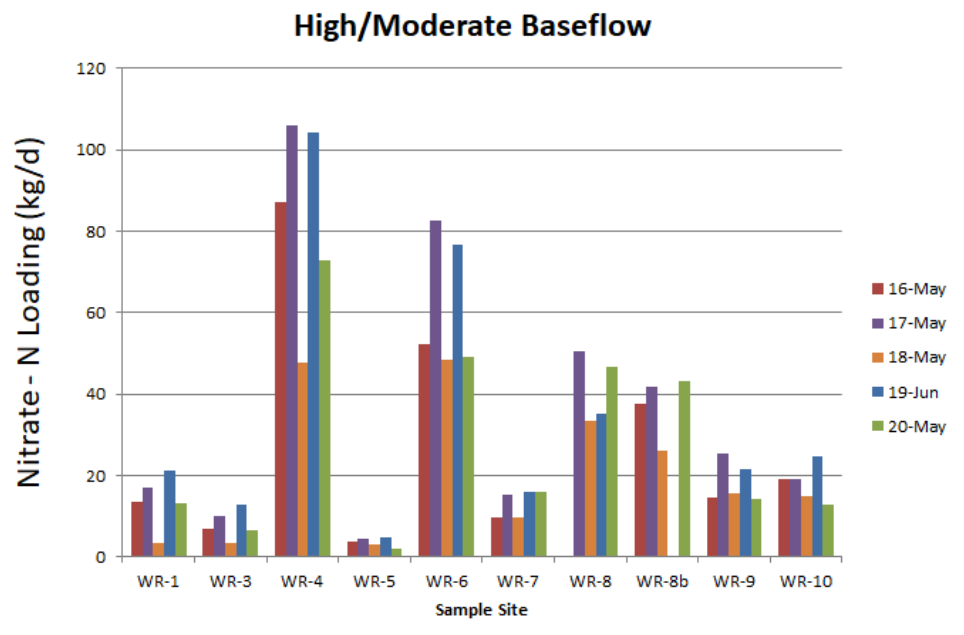
**Thermal imaging surveys:** A new method of surveys for CQWF involves the use of a handheld thermal imaging device. The goal of this piece of equipment was to gather a better understanding of coldwater input and spring locations within our Watershed. Identifying these areas plays a crucial role by helping to safeguard our rivers in the future, in terms of climate change. Moving forward this also helps us to locate these important areas that we would not be able to locate without this piece of equipment. This piece of equipment will prove crucial for redd surveys going forward as it can be used to observe if salmonids are spawning in close proximity to any springs that may have seepage nearby. To date we have catalogued four springs on the West River and observed eight coldwater inputs.



**Figure 2.** Monthly temperature averages on the West River at 9 locations from May 2019 to April 2020. **Nitrate monitoring:** On major tributaries, nutrient concentrations were monitored twice annually; once during low and high flow periods (Figures 3 and 4). In total 10 index sites are monitored on the West River (Figure 6).

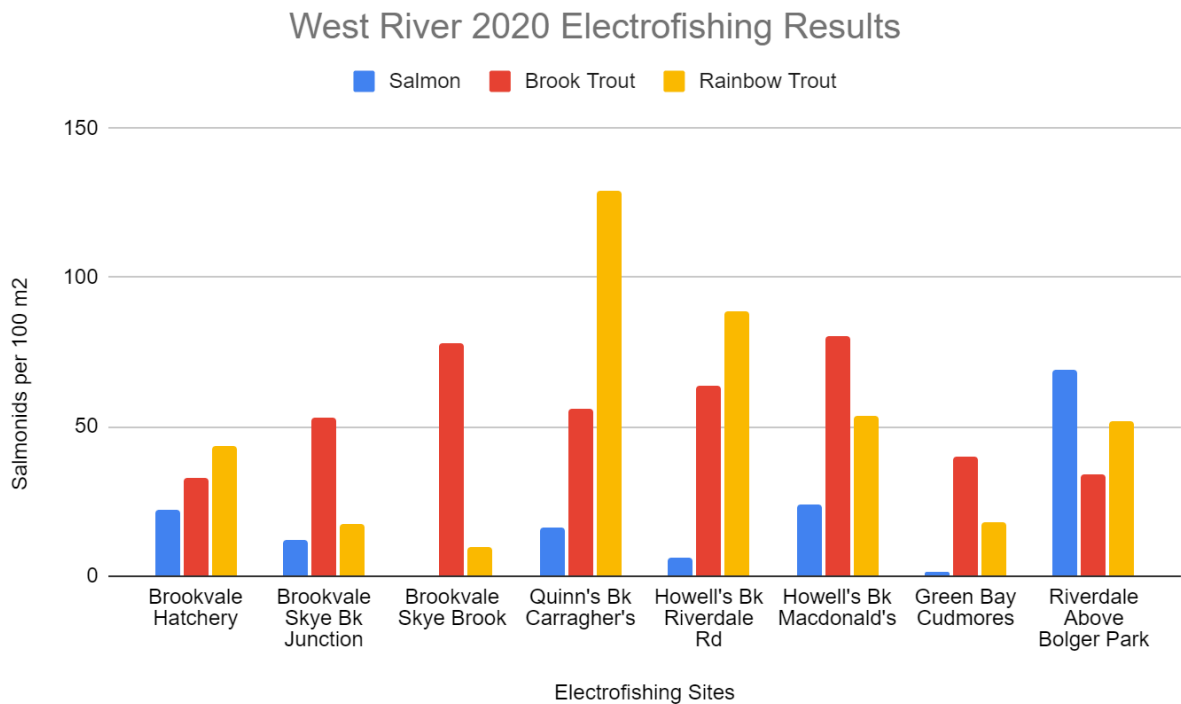


**Figure 3.** Site comparison of nitrate loading during fall season low flow period on the West River from 2016-2020.



**Figure 4.** Site comparison of nitrate loading during fall season-high/moderate flow period on the West River from 2016-2020.

**Electrofishing data:** In 2025 thirteen index sites were surveyed for salmonid densities (Figure 5). A three-pass technique was used with barrier nets at all sites except the Howells Junction site. The data is presented below in Figure 5. Atlantic salmon were present at all sites except for the Skye Brook site with densities ranging from 0 - 68.9 per 100 m<sup>2</sup>.



**Figure 5.** Electrofishing data from 2020 at eight sites on the West River showing salmonid density per 100m<sup>2</sup>.

#### Redd Surveys:

Annual redd surveys have also been conducted for Atlantic salmon on the West River from 1990 – 96 and 2008 – 25; while conducting redd surveys, trout spawning areas and other critical habitats were always noted. Table 1 displays Atlantic salmon redds counted from 2011 to 2025. All major tributaries are surveyed along with the entire main branch. In recent years salmon redds have been found in areas that are newly restored and this is encouraging as they are responding in a positive manner to restoration activities. It is important to record the total number of redds but also the areas in which spawning occurs to further target management activities. The redd survey standardization protocol has also been developed and implemented on the West River where any redds observed have dimensions recorded such as the tailout and depression width and length measurements are recorded along with detailed notes. This should help to give better information on Atlantic salmon redds on the West River and has been circulated to other groups who have salmon to utilise this new data sheet to provide further



information on the redds observed on Prince Edward Island representing a major step forward in redd survey standardization.

**Table 1.** Salmon redd count surveys on the West River since 2011 (\* indicates an incomplete count).

Year	2010	2011	2012	2013	2014	2015	2016	2017	2018	2019	2020	2021	2022	2023	2024	2025
# of Redds	88	87	89	168	113	113	146	149	124*	114	101	38*	141	84*	130	87

**Fish Fence and Riverwatcher:** A new development for the West River was the installation of a resistance board weir fish fence, and Riverwatcher camera scanner unit this piece of technology was installed on the West River to help update conservation metrics for the island as a whole. This study was based on the study undertaken by Todd Dupuis in the 90s in which he operated a fish fence and fish trap to gather a consensus of the West River fish populations and timing of migrations. This represents a considerable leap forward in how we understand the rivers on PEI and the salmonids that inhabit them. A standalone report will be produced annually that will be updated annually for the years that we have this camera (2025 to 2027). Please see Riverwatcher summary for a detailed breakdown on the study results.

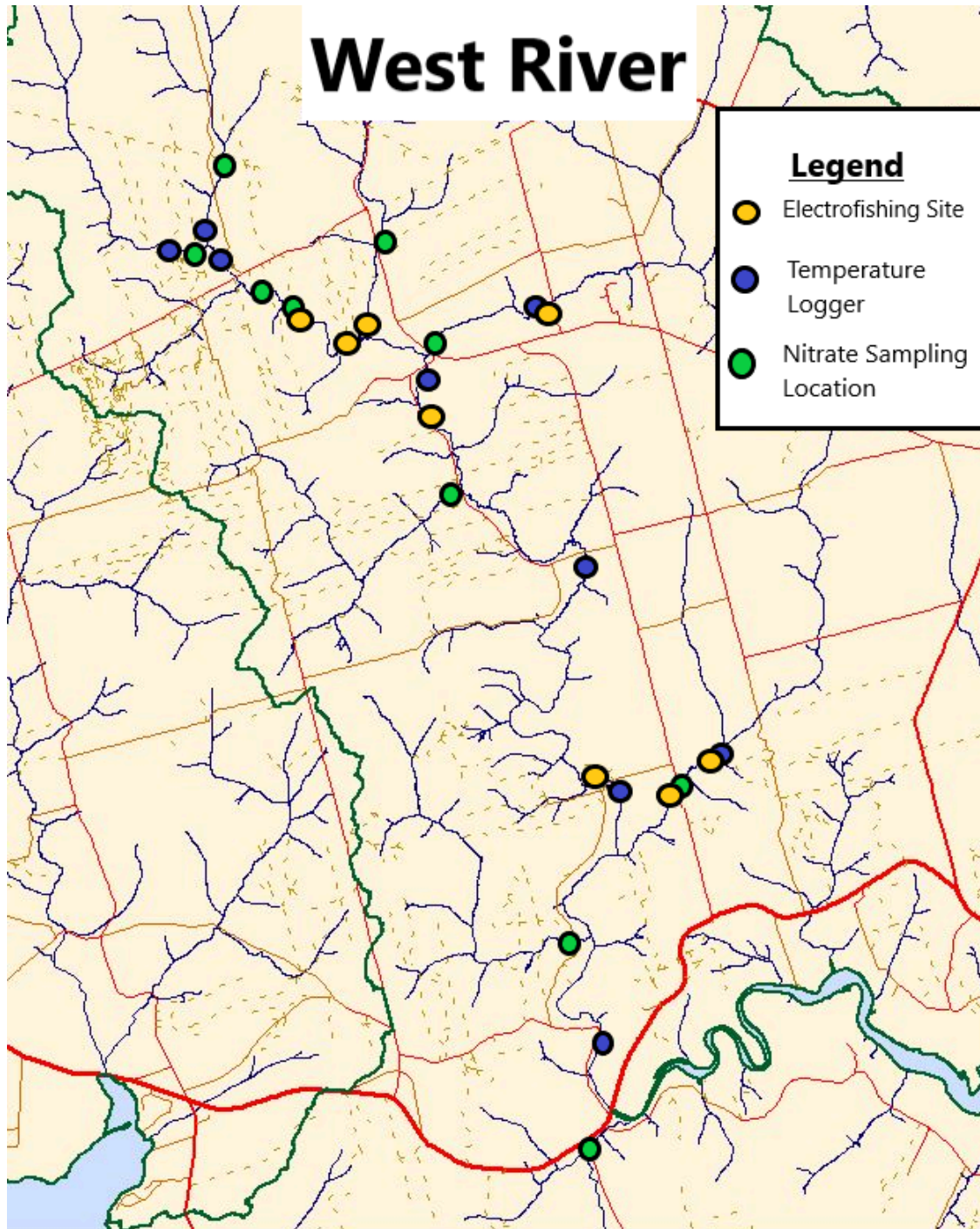


Figure 6. Map of the West River with data collection sites labeled.

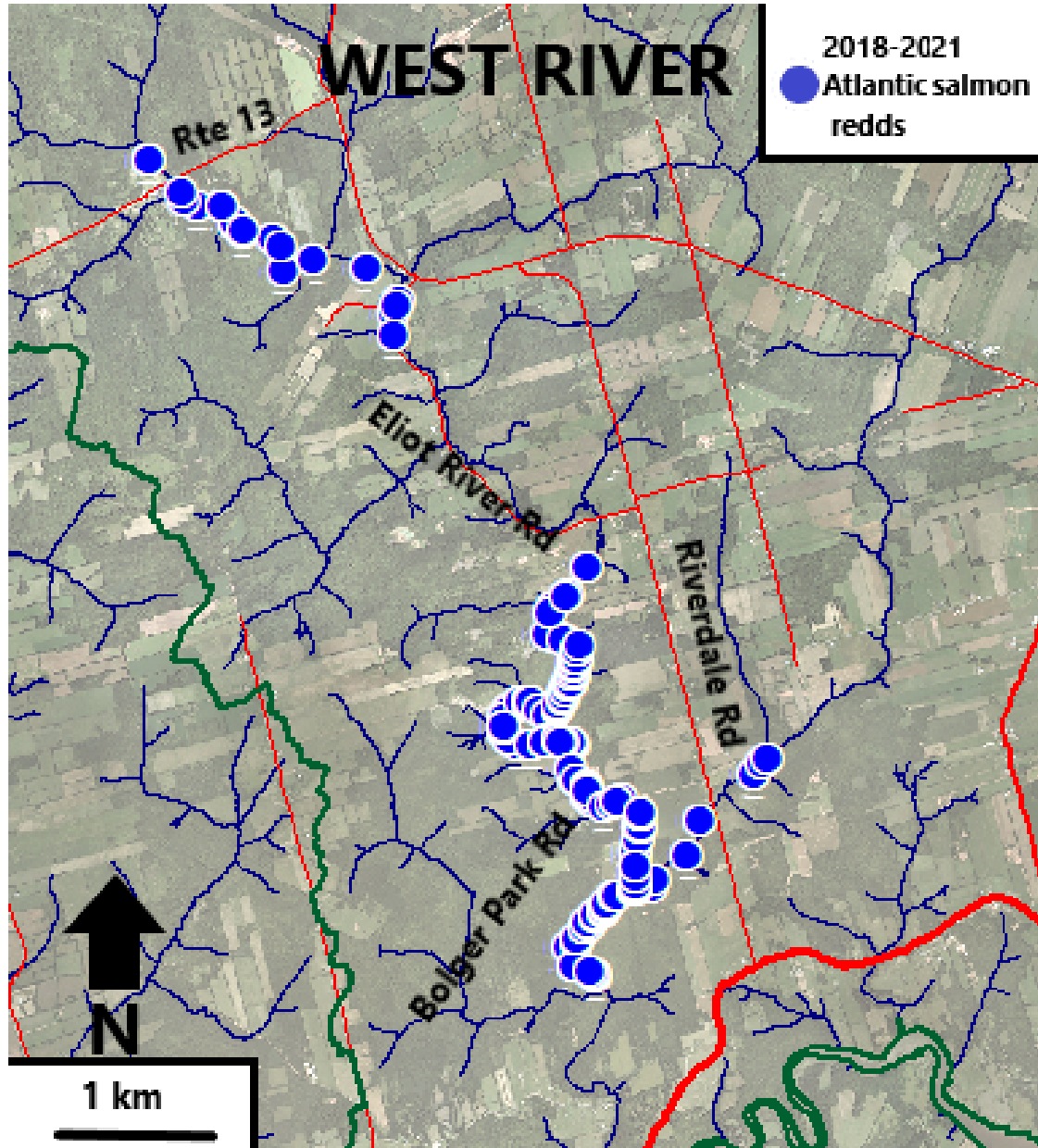


Figure 7. Salmon redds on the West River in 2024.

#### 4.0 Habitat Requirements

Each life stage of salmon utilizes unique habitat components with an array of requirements and pressing limiting factors. Life stage requirements can be broken down into three general habitat components that should be targeted to improve early life stage success and productivity in streams. The three are: **spawning habitat**, **juvenile rearing habitat**, and **migratory areas**. When managing a section of river these three general habitat components should be identified to gauge the level of productivity and also have limiting factors associated with the degradation of said areas identified. Limiting factors that negatively affect local salmon populations usually target one of these general habitat components. For

example, severe sedimentation negatively impacts spawning habitat quality and juvenile rearing habitat which will ultimately lead to reduced productivity and local population declines. By addressing sources of sediment, the spawning habitat and rearing habitat should be easier to enhance and re-establish with additional restoration tactics. The historic usage of said identified habitat components is very important when moving forward with habitat management. The current situation of salmon and habitat usage may be the result of many decades of habitat degradation and may not always be the most ideal or productive area for salmon production. The following categorizes the life stage requirements into three general habitat components used during the salmon freshwater residency.

#### **4.1 Spawning and Egg Incubation**

The first task is to conduct annual redd surveys to identify which areas are currently being used for spawning activity. Talking to anyone who has historic knowledge of the area is also key in this step as some local experts may have prior knowledge of historic areas salmon used for spawning, which should be considered in management implications. Once ideal spawning areas are identified for targeting, the quality of spawning habitat can be improved via reducing instream sediment bedload, un-imbedding spawning substrate by manually breaking up the substrate, and adding desired fist-sized spawning substrate to identified areas. Salmon chose the placement of redds in a location with accelerating water velocity and decreasing depth (means of providing embryos with oxygen) in the transition area from pool to riffle and an area with coarse spawning substrate to ensure high egg survival. Other factors that should be considered in spawning habitat quality include nearby pools for salmon to stage in with adequate cover (under banks or LWD), quality of spawning substrate (round fist-sized rock is preferred with minimal fine sediments), and chronic sources of sediment sources upstream of spawning areas. Woody debris can also be positioned in-stream to help create areas with ideal water velocities to increase available spawning habitat.

#### **4.2 Juvenile Rearing Habitat**

Young salmon prefer occupying riffle areas (<20cm in depth with coarse streambed) while depth preference for coarse substrate increases with body size. Juvenile salmon are territorial and higher densities can be found in riffle/run areas when coarse substrate and ideal flow are present. The first step in improving this habitat component is relating juvenile rearing habitat to spawning areas. Juvenile salmon will migrate downstream over time so the rearing habitat should be located directly below spawning areas and progress down to the estuary. If it is identified that rearing habitat areas are lacking or are impaired, the coarseness of the streambed can be improved upon. Using local rock sources (i.e. bedrock slabs or embedded boulders) to create boulder clusters in riffle/run areas is a way to increase streambed coarseness and also increase interstitial spacing between rocks. It is important to remember that juvenile salmon have preferred dietary items (mayflies and stoneflies) so improving habitat requirements for desired invertebrates also improves the quality of habitat for juvenile salmon (i.e. leave woody debris in stream channel, rocks with interstitial spacing also improve habitat for invertebrates, etc).

#### **4.3 Migratory corridor**

To complete the salmon life cycle adults must return from the sea to the freshwater environment to spawn and begin the life cycle again. The most important aspect of this stage is to ensure the adult

fish can reach spawning areas. Annual monitoring of migratory corridors is required to ensure any major blockages (beaver dams, log jams, etc) are removed before spawning season. It is also important to consider that adult fish are anadromous and require a transition period when leaving the saltwater environment and entering the freshwater. This requires adequate holding areas in the head-of-tide region to allow the salmon to slowly adjust to the changing environment. Another factor to consider is the frequency of adequate holding pools that an adult fish can comfortably stage in while migrating upriver. When attempting to encourage adult fish to enter into major tributaries the frequency of holding pools should be every 200-500m. Ideally holding areas should be situated nearby spawning areas. If class A pools cannot be achieved large cover structures can be installed (ie full-length cover logs or multi-log structures) nearby spawning areas to encourage them to stage nearby prior to spawning. Also, avoidance of stretches with low water should be resolved if possible, by resolving any braids and narrowing the stream channel in over widened areas.

When considering all life stage components, the current areas used by salmon should be targeted for enhancement and future restoration efforts should be targeted on areas that had historical significance for range expansion. The following will discuss important historic areas utilized by Atlantic salmon, identify limiting factors, and possible restoration techniques that could be utilized to improve habitat components.

## **5.0 Threats to Salmon**

### **5.1 Climate Change**

A changing climate has posed a range of challenges to salmon survival during the freshwater portion of their lifecycle. During the fall of 2014 and spring 2015, the West River experienced two events described as “one in one hundred year floods”. Record-breaking snowfall resulted in a massive spring freshet, which would have had severe negative effects on egg survival. Redds could have been washed away and/or buried in sediment. If there is an increase in dramatic flooding events like experienced in 2014/2015 this may result in an increase in sedimentation and reduced egg survival.

A prediction with climate change is an increase in rainfall events during the winter months, which may result in a “super cooling” event as water runs off the land at near-freezing temperatures. This may result in a hypothermic shock to the eggs resulting in reduced egg survival. On the other end of the spectrum during 2020 there were drought conditions experienced resulting in low water levels during the spawning season. Salmon redds were not recorded up any major tributary and were recorded in abnormal areas resulting in eggs placed in lower quality habitats. Another note with low water conditions was the increase in sightings of salmonids with fungal infections. A graduate study was ongoing during 2020 and resulted in multiple adult salmon captured with a fungal infection. During low water, the water is concentrated and rates of this type of infection increases, which has unknown consequences to the broodstock population. During the same period, dozens of adult brook trout were found dead covered in the same fungal infection.

### **5.2 Sedimentation**

Sediment is considered a pollutant and is the biggest threat to salmon on PEI and the West River. It reduces habitat quality in multiple aspects. It reduces egg survival by infiltrating the spawning

substrate which reduces the oxygen supply to the eggs during the incubation period. When the salmon fry emerge they require a coarse stream bed bottom for cover. After the fry emerge they become territorial and the size of the territories is directly related to the habitat quality. A coarse streambed bottom can support a higher number of individuals compared to a homogenous streambed bottom with no interstitial spaces. Another factor that can affect the growth of juveniles is the available dietary items present. Ideal dietary items are benthic macroinvertebrates, such as mayflies and stoneflies, and are usually found in high-quality habitats with rocky streambed bottom as opposed to a silt-dominated stream, which would contain lower quality food items (midges, worms, etc). Sediment runoff enters the stream from a range of sources, in the West River area the main sources are secondary roads and agricultural fields. CQWF has been actively working with local landowners and the Department of Transportation Infrastructure and energy to resolve problematic areas. See Appendix for sediment trap locations for future excavations.

### **5.3 Fish Kill Events**

Sadly, fish kills happen far too often and are recurring events here on PEI. On the Clyde River, the most recent fish was in 2016 on the West branch originating close to the Colville road. In the past, there were other fish kills recorded in 2002, and 1999. The most recent fish kill recorded on the West River was in 1971. Fishkill events devastate local populations as the young age classes are typically completely whipped out having detrimental long-term effects. Agricultural fish kill event impacts are also likely to intensify as a result of climate change.

### **5.4 Barriers to Migration**

Beaver issues arise from time to time on the West River watershed. With their low densities, they are considered more of an annoyance with minimal effort to manage when compared to other watersheds. CQWF has a beaver management plan and manages a beaver-free zone. Culverts problems as well as impoundments generally cause little to no problem on the West River, but can and do cause drastic effects on other watersheds. One of the most significant impacts of salmonids is the warming effect on downstream waters. This is especially important in watersheds such as the Morell where numerous impoundments flood low relief land, changing the temperature regime for the river. (Guignion 2018).

### **5.5 Invasive Species**

Rainbow trout can be found throughout the entire West River watershed drainage basin and have been an ongoing problem for decades. Intraspecific competition for spawning areas, food, as well as cover and space have created large drawbacks for native salmonid populations. While brook trout and salmon both spawn in late autumn, rainbow trout spawn in April. On the West River, rainbow trout have been observed to excavate their redds on top of Atlantic salmon spawning sites from the previous fall. Rainbow trout are known to be aggressive and fast-growing and their impacts on salmon in PEI streams are not fully understood. Recent studies in PEI suggest that because of habitat separation between the three salmonid species, the impacts of rainbow trout may not be the most significant threat to native salmonid populations. A large rainbow trout hatchery in Brookvale has been a sight for concern. In recent years, the worry was expressed around water quality exiting the facility and the quantity of water pumped to operate the hatchery (Guignion 2018).

## 6.0 Action Plans

### 6.1 Riverdale

The Riverdale area can be described as the main branch of the West River that flows into Crosby's Pond, upriver through the "Riverdale Horseshoe and Boy Scout Camp" area and into Green Bay. The majority of the riparian area along this section contains mature forest with a healthy functioning meander sequence. In total it contains ~7 km of river, which CQWF maintains on an annual basis and promotes as an enjoyable canoe route. This section of the river contains the majority of salmon habitat and populations considering in 2024 72 out of 87 salmon redds were found along this section of the river. Some of the recent restoration achievements CQWF has made include the following:

- This section of river is passable via canoe or kayak as of 2017
- Repeat areas used for spawning have been identified and annually enhanced
- 30+ riffle sites enhanced for juvenile rearing habitat
- Major cover structures installed in +15 holding areas
- Over widened areas that posed a fish passage issue during low flow were addressed

Major limiting factors that threaten Atlantic salmon populations include the following:

- Sedimentation (mainly from secondary roads, agricultural fields and input from Canada Games construction)
- Poor spawning habitat quality in areas due to sedimentation
- Reduced juvenile rearing habitat due to sedimentation
- Deforestation in the "Riverdale Boy Scout" area

Many factors contribute to these limiting factors and when considering all factors, a complex situation is illustrated. For example, sources of sedimentation are a factor that affects spawning habitat quality (embeds spawning substrate and reduces oxygen supply to eggs) and also affects juvenile rearing habitat by reducing the streambed interstitial spacing and limiting insect productivity (food sources and cover for juvenile). To resolve this issue the source of sediment must be resolved, instream sediment must be removed or managed then finally work can begin to reverse said damages.

### Habitat Description

The first reach of this section of river is from Crosby's Pond up to Bolger Park bridge consisting of ~3km of river. During spawning season redds can be found through the entire section and in 2025 31 of 87 redds were found along this stretch. During 2020 major riffle sites were targeted at +30 locations with the goal of improving juvenile rearing habitat via boulder clusters. Very little riparian enhancement occurs along this section as it already contains a well-established mature forest and a majority of this area is owned and protected by the Provincial Government. **Certain areas lacking cover which extends into the midchannel are slated to have restoration actions occur throughout 2026 through the targeted addition of CWM in strategic manner via the use of a winch to position cover into areas lacking overhead cover in the middle of the channel (eg. Addition of CWM into Sweenies above Crosbies pond).**

The next reach is the section above Bolger Park Road and contains ~4km of river. It contains the best salmon habitat on the West River. Being surrounded by mature old-growth forest this section of river has fewer sediment-related problems and contains highly productive riffle areas. A graduate study

found that in multiple locations the salmon densities were in the range of 70 fish per 100m<sup>2</sup>. The bulk of salmon spawned along this section indicated in 2025 as 41 of 87 redds was found along this section. A noticeable input of sediment was released into the river during the 2023 spawning season which has made its way down to the Riverdale Horseshoe working to address this will be a major action item to be addressed in the future as this could be degrading spawning habitat within the Riverdale Horseshoe.

## Recommendations

The following are objectives to help further improve local populations of salmon along the Riverdale section:

- On an annual basis survey for redds to monitor areas that are repeatedly used for spawning and use the information for future enhancement activities
- Continue monitoring electrofishing index site below Bolger Park Road and Howells Junction
- Maintain 7 km of stream connectivity by ensuring the migratory corridor from sea to spawning areas remains clear of blockages and beaver activity
- Work with DTIE to resolve sediment runoff from Bolger park and Currie rd
- Monitor secondary roads and agricultural fields for sediment input
- Enhance current spawning areas by loosening substrate (up to 30cm deep) with rakes and removing fine sediments to ensure future spawning efforts have the ideal substrate to create high-quality redds. The addition of preferred substrate (fist-sized rock) can be added in areas where shale/flat rock is dominant (most important below Bolger Park)
- In areas with ideal spawning substrate but lacks preferred flow velocities install structures to encourage spawning by creating ideal hydraulic parameters (both above and below Bolger Park Road.
- Monitor for fish with fungal infection and keep detailed records of # of infected fish, # of dead fish, and # of salmon with fungal infection
- Continue to improve juvenile rearing habitat in riffle/run areas above and below Bolger Park Road (Important riffle to be improved at end of Horseshoe section)
- Monitor sediment trap in Crosby's Pond for future re-excavation
- Monitor deforestation activities
- Expand spawning beds into Riverdale horseshoe
- Monitor sediment deposition into this area during spawning season surveys

**Table 2.** Management recommendations for the Riverdale region of the West River

Annual To-Do Checklist	Long Term (5+ years)	Short Term (1-5 years)	Cost/Benefit	Priority
<b>Area: Riverdale</b>				
Redd surveys	X		Low/High	1
Electrofishing index site below Bolger Park Road & Howells Junction	X		Low/High	1
Walk section to ensure no barriers to fish		X	Low/High	1



passage				
Work with DTIE to resolve sediment runoff from Bolger park road and Currie road	X		Low/High	1
Monitor secondary roads and agricultural fields for sediment input		X	Low/High	1
Rake spawning areas identified via redd surveys		X	Low/Medium	1
Addition of preferred substrate to spawning areas where shale/flat rock is dominant		X	Low/Medium	2
Install structures to create ideal hydraulic parameters above and below Bolger Park Road		X	Medium/Medium	2
Monitor fungal infection frequency	X		Low/High	2
Increase/Improve Juvenile rearing habitat		X	Low/high	2
Monitor sediment level in Crosby's Pond for future re-excavation	X		High/high	3
Continue to monitor for and catalog spring seepages and cold water inputs from first order tributaries	X		Low/Medium	3
Monitor deforestation activities	X		Low/Medium	3
Expand spawning beds to Riverdale horseshoe	X		Low/Medium	3

## 6.2 Howells's Brook

Howell's Brook has been a main focus for CQWF over recent years for restoration activities. Since 2014, CQWF has improved many habitat aspects for Atlantic salmon on Howell's Brook with the objective of creating high-quality habitat to increase local populations. Some major achievements on Howell's Brook include:

- Improving almost 7 km of stream connectivity
- Constructing a sediment by-pass pond above Peter's Rd (re-excavated 2 times)
- Addressing and identifying major sources of sediment (Peter's Rd in 2016)
- Improved riparian zone habitat (+750 trees in +45 patch cuts)
- Increased number of holding pools on the lower 1.2km of the stream (2019, 2024)
- Improved riffle habitat at ~45 sites on lower 3.2 km of river
- Improved/increased spawning areas
- Monitor/identify spawning areas every year during November/December (see Figure 7)
- Monitor salmonid densities at Riverdale Rd, Mcdonalds, Wynn Rd, and Quinn Rd

Major limiting factors that threaten Atlantic salmon populations on Howell's Brook include the following:

- Sedimentation (mainly from secondary roads and agricultural fields)
- Poor spawning habitat quality in areas due to sedimentation and shale substrate

- Reduced juvenile rearing habitat due to sedimentation
- Inadequate migratory corridor (lack of deep holding pools and/or suitable cover)
- Poor riparian habitat along certain areas.

### **Habitat Description**

On Howell's Brook the lower 1.2km (section below Riverdale Rd) has been identified primarily as ideal juvenile habitat with many long riffles/run sections with desired coarse substrate. Not many, but few areas in this 1.2 km section have been identified as spawning areas. During 2019 this section of stream was targeted to improve the migratory corridor by increasing the amount and frequency (goal every 200m) of deep-water holding pools for migrating adult fish. This entire stretch has a well-established mature riparian zone containing mature Eastern hemlocks and hardwood species.

The following 1.4km stretch of the stream (between Riverdale Road and Peters Road) contains ideal spawning habitat and in 2019 the bulk of salmon redds were found along this reach. In recent years CQWF has improved the stream channel meander sequence by altering problematic LWD, and installing brush mats to help restore a healthy flowing stream channel. Recently CQWF has spent a tremendous amount of effort in improving riffle habitat for rearing habitat, improving/increasing spawning areas, and installing cover structures in pools nearby potential spawning areas. The first several hundred meters of this section (directly above Riverdale Rd) is predominately alder growth but eventually changes to a mature hardwood forest. CQWF has created alder patch cuts and planted with native trees/shrubs in this area to help improve the riparian habitat.

The next section is 1.3km and spans from Peter's Rd to Wynn Rd and is the last section that has been identified of importance for salmon habitat. The lower to mid reaches of this stretch has been identified mainly as habitat for spawning with few reaches for juvenile rearing habitat. This section has a by-pass sediment pond constructed ~700m above Peter's Rd and plays a very important role in protecting all habitats below by capturing and permanently removing mobile sediment. This section has moderate riparian habitat quality as much of it is predominately alder growth and early succession forest. Over 30+ alder patch cuts have been created along this stretch in order to help improve the riparian habitat.

The remainder of the upstream stream habitat is not significantly important to salmon but is important in enhancing and maintaining this section for other salmonid species. The upper reaches of Howell's Brook (+3km) had a significant sediment load and was addressed by selectively removing alders and installing brush mats. It is important to keep managing this section to ensure the legacy sediment issue is resolved and does not impair the progress made downstream. Improving the riparian habitat in weakened areas, working with the Dept of Transportation Infrastructure and Energy (DTIE) and local farmers to reduce sediment input is very essential to continue progress.

### **Recommendations**

The following are objectives and goals for future improvement of habitat components on Howell's Brook:

- On an annual basis survey for redds to monitor areas that are repeatedly used for spawning and use the information for future enhancement activities
- Continue monitoring electrofishing index site below (Riverdale rd, MacDonald's, Wynn rd, and Quinn rd)

- Maintain almost 7 km of stream connectivity by ensuring the migratory corridor from sea to spawning areas remains clear of blockages and beaver activity
- Work with DTIE to resolve sediment runoff from Sheepskin and Peter's rd
- Monitor secondary roads and agricultural fields for sediment input
- Enhance current spawning areas by loosening substrate (up to 30cm deep) with rakes and removing fine sediments to ensure future spawning efforts have the ideal substrate to create high-quality redds. The addition of preferred substrate (fist-sized rock) can be added in areas where shale/flat rock is dominant. This is most important on the lower 1.2km stretch below Riverdale Rd as this section will support the majority of juvenile individuals and also should occur immediately downstream of spawning areas.
- In areas with ideal spawning substrate but lacks preferred flow velocities install structures to encourage spawning by creating ideal hydraulic parameters. This will be important on the lower 1.2km reach (below Riverdale Rd) where the substrate is mainly shale. Enhancing spawning habitat is most important on the middle section (between Riverdale Road and Peter's Road) where excessive fine sediment is an issue.
- Establish adequate holding areas nearby spawning areas to ensure adult fish are willing to stage and spawn nearby (pool creating deflectors and/or large cover structures an adult salmon can hide underneath)
- Monitor for fish with fungal infection and keep detailed records of # of infected fish, # of dead fish and # of salmon with fungal infection
- Continue to improve juvenile rearing habitat in riffle/run areas below important spawning areas and along entire 1.2km section below Riverdale Road
- Monitor sediment trap on Peters rd for future re-excavation
- Continue improving stream meander function by monitoring problematic LWD, alder growth, and installing brush mats to narrow over widen sections (most important on the section above Peter's Rd)
- Continue improving weakened riparian habitat areas by planting native hardwood trees and shrub species (creating alder patch cuts, planting alongside agriculture fields, expanding buffer zones)

**Table 3.** Management recommendations for the Howell's Brook region of the West River

Annual To-Do Checklist	Long Term (5+ years)	Short Term (1-5 years)	Cost/Benefit	Priority
<b>Area: Howells' Brook</b>				
Redd surveys	X		Low/High	1
Electrofishing index sites (Riverdale rd, MacDonalds, Wynn rd, and Quinn rd)	X		Low/High	1
Walk section to ensure no barriers to fish passage		X	Low/High	1
Work with DTIE to resolve sediment runoff from Sheepskin and Peter's rd	X		Low/High	1
Monitor secondary roads and agricultural fields for sediment input		X	Low/High	1

Rake spawning areas identified via redd surveys		X	Low/Medium	1
Addition of preferred substrate to spawning areas where shale/flat rock is dominant		X	Low/Medium	2
Install structures to create ideal hydraulic parameters above and below Bolger Park Road		X	Low/Medium	2
Install structures to create pools		X	Low/Medium	2
Monitor fungal infection frequency	X		Low/High	2
Increase/Improve Juvenile rearing habitat		X	Low/High	2
Monitor sediment levels on Peters Road sediment trap for future re-excavation	X		High/High	2
Continue to monitor for and catalog spring seepages and cold water inputs from first order tributaries	X		Low/Medium	2
Installing brushmats to narrow over widen sections		X	Low/High	2
Continue improving weakened riparian habitat areas	X		Low/High	2

### 6.3 Brookvale

The Brookvale region of the West River is the uppermost region of the watershed drainage basin and was one of the firstly targeted areas of restoration beginning in 2010. The Curley's Property was one of the first endeavors that CQWF began back in 2010 and since then the habitat quality for salmon has made a complete transformation. Since 2010 CQWF has made the following achievements:

- Installed and maintained a sediment by-pass pond along the Curley's Property (excavated 3 times)
- Maintained an instream sediment trap immediately above Ross Rd (excavated 3 times)
- On an annual basis ~6.6 km of stream habitat is maintained
- Survey for redds during spawning season
- Improved riparian habitat (over +1000 trees in +55 alder patch cuts)
- +50 cover structures installed
- 10 pool creating structures installed (cross vane and digger logs)
- Monitor salmonid densities via electrofishing at Curley's, Arsenault's, below hatchery, Skye Brook junction and Skye Brook

Major limiting factors that threaten local Atlantic salmon populations in the Brookvale region include:

- Sedimentation reducing juvenile rearing habitat and spawning habitat (Ross road and agricultural fields near Route 225)
- Lack of ideal spawning substrate in midsection of the Brookvale region
- Brookvale rainbow trout hatchery (water quality concerns and escaped rainbow trout)
- A new landowner in the headwater region began a maple syrup operation and cut a significant amount of trees in the buffer zone. This issue has been addressed but will continue to be monitored

## Habitat Description

The Brookvale area begins at the junction of Skye brook and continues upriver into headwater regions. This uppermost area of the drainage basin has three tributaries: Skye Brook, which enters at the lower region of Brookvale, Ross Brook, which is the east tributary at the Curley's property, and the main West River, which is the west tributary at the Curley's property. Skye Brook does not have local spawning populations of salmon and without stocking efforts, neither tributary on the Curley's property would have local populations either. Both tributaries above the Curley's property contain ideal juvenile rearing habitat and minimal predators (large trout), hence the reason stocking has occurred along these sections. Stocking in the Brookvale area started back in 2015 and has occurred yearly since (Last stocked in 2022). The riparian habitat varies along both tributaries containing sections with dense alder thickets and mature Acadian forests. The main tributary contains some mature old-growth forest as you travel further up the branch with minimal alder thickets when compared to Ross brook.

The midsection of this area extends from the junction of Skye brook up to Curley's property forks above Rte 13 covering ~3km of the stream and contains ideal salmon juvenile rearing habitat as the streambed bottom is dominantly shale/larger sized substrate. There are areas with smaller and ideal-sized substrates for spawning but activities should take place to improve this aspect. The best spawning habitat is located above Rte 13 along with the Curley's Property where redds were detected for the first time in decades in 2018 (n= 3) and 2019 (n= 1). Considering the entire Brookvale area there were 14 redds in 2019. The reach of the stream from the Skye brook junction to the Brookvale hatchery has a well-established riparian margin with mature Acadian species (yellow birch, eastern hemlock, red & sugar maple). The section of stream extends above the hatchery and reaches up past Route 13 to the Curley's forks is mainly alder and early succession species. This early succession area has been the focus for tree planting and alder patch cuts since 2010 and has resulted in +35 plantations with +1000 native trees/shrubs planted.

## Recommendations

The following are objectives and goals for future improvement of habitat components for Brookvale:

- On an annual basis survey for redds to monitor areas that are repeatedly used for spawning and use information for future enhancement activities (Curleys, Arsenault's, hatchery, Skye brook and Skye brook junction)
- Continue monitoring electrofishing index sites (Curleys, Arsenault's, hatchery, Skye brook and Skye brook junction)
- Maintain 6.6 km of stream connectivity by ensuring the migratory corridor from sea to spawning areas remains clear of blockages and beaver activity
- Work DTIE to resolve sediment runoff from Ross rd
- Monitor secondary roads and agricultural fields for sediment input
- Enhance current spawning areas by loosening substrate (up to 30cm deep) with rakes and removing fine sediments to ensure future spawning efforts have the ideal substrate to create high-quality redds. The addition of preferred substrate (fist-sized rock) can be added in areas where shale/flat rock is dominant. This is most important along the midsection below the Brookvale hatchery as this section will support the majority of juvenile individuals and should also occur immediately downstream of spawning areas.

- In areas with ideal spawning substrate but lacks preferred flow velocities install structures to encourage spawning by creating ideal hydraulic parameters. This should occur in areas where the suitable substrate is present without ideal flow velocities
- Monitor for fish with fungal infection and keep detailed records of # of infected fish, # of dead fish, and # of salmon with fungal infection
- Continue to improve juvenile rearing habitat in riffle/run areas below important spawning areas and below the hatchery
- Monitor sediment by-pass pond at Curley's and in-stream sediment trap on Ross rd for future re-excavation
- Investigate the hatchery as a probable cause for the high rates of broodstock fungal infections and water quality issues
- Continue improving weakened riparian habitat areas by planting native hardwood trees and shrub species (creating alder patch cuts, planting alongside agriculture fields, expanding buffer zones).

**Table 4.** Management recommendations for the Brookvale region of the West River

Annual To-Do Checklist	Long Term (5+ years)	Short Term (1-5 years)	Cost/Benefit	Priority
<b>Area: Brookvale</b>				
Redd surveys	X		Low/High	1
Electrofishing index sites (Curleys, Arsenault's, hatchery, Skye brook, and Skye brook junction)	X		Low/High	1
Walk section to ensure no barriers to fish passage		X	Low/High	1
Work with DTIE to resolve sediment runoff from Ross rd		X	Low/High	1
Monitor secondary roads and agricultural fields for sediment input		X	Low/High	1
Rake spawning areas identified via redd surveys		X	Low/Medium	1
Addition of preferred substrate to spawning areas where shale/flat rock is dominant		X	Low/Medium	2
Install structures to create ideal hydraulic parameters above and below Bolger Park Road		X	Low/Medium	2
Monitor fungal infection frequency	X		Low/High	2
Increase/Improve Juvenile rearing habitat		X	Low/High	2
Monitor and re-excavate the sediment by-pass pond at Curley's (re-excavated 2025) and in-stream sediment trap on Ross Road (re-excavated 2023)	X		High/High	2
Continue to monitor for and catalog spring seepages and cold water inputs from first order	X		Low/Medium	2

tributaries				
Investigate the hatchery for the high rates of broodstock fungal infections and water quality issues		X	Low/High	2
Continue improving weakened riparian habitat areas	X		Low/High	2

## 6.4 Quinn's Brook

Quinn's Brook is the next major tributary downstream of Brookvale, located just ~1km below the junction of Skye Brook. This tributary has a long history of restoration activities with CQWF since the early 2000s. Carragher's Pond is located on Quinn's Brook just above Peter's Road and was completely re-excavated in the early 2000s and had the upper sediment trap cleaned out twice since then. Historically this tributary had local salmon populations up until 2014. It is believed that rainbow trout were the main reason salmon disappeared from this section as rainbow trout redds were detected to be superimposed over salmon redds. This tributary has the highest densities of rainbow trout detected during 2020 electrofishing surveys (Figure 5). Quinn's Brook also has the highest temperatures recorded which may contribute to the rainbow trout's success as they emerge later than native salmonids and warmer water temperatures allow for faster growth rates.

Some major achievements on Quinn's Brook include:

- Improving almost ~6 km of stream connectivity
- Constructing a sediment by-pass pond between Peter's and Mill Road (re-excavated once)
- Carragher's Pond enhancement project in the early 2000s and maintaining in-stream sediment trap at the upper end (re-excavated twice since 2000s)
- Improved riparian zone habitat (+600 trees in +30 patch cuts)
- Monitor/identify spawning areas every year during November/December
- Monitor salmonid densities at electrofishing index site below Carragher's Pond

Major limiting factors that threaten Atlantic salmon populations on Quinn's Brook include the following:

- Sedimentation (mainly from the Mill Road)
- Poor spawning habitat quality in areas due to sedimentation (below Clarkin Road)
- Reduced juvenile rearing habitat due to sedimentation (below Clarkin Road)
- Poor riparian habitat along with certain areas
- Competition from invasive rainbow trout (highest densities are along Quinn's Brook)

### Habitat Description

The junction of Quinn's Brook to the main West River is located immediately above McKenna Road. This section of stream extends up to Clarkin Road covering 2 km of the stream. Along this reach, there are select areas for spawning and juvenile rearing. The main limiting factor for this reach is embedded substrate and lack of spawning substrate. This section has a mature and well-established riparian area up until the last 300m before Clarkin Road where it transitions into alder thickets. Along this 300 m stretch, CQWF has +15 alder patch cut plantations, in which native Acadian species have been planted.

Proceeding above Clarkin Road the alder thicket continues for 150m until a well-established and mature riparian area returns and continues up to Peter's Road. This section from Clarkin Road to Peter's road is relatively short (~1.2 km), but contains the best spawning habitat for salmon on Quinn's Brook where salmon redds were historically found. These sections contain an ideal substrate for spawning and since Carragher's Pond is located upstream these sections are protected from sedimentation. CQWF in 2020 worked through this section and has initiated the restoration process of restoring a properly functioning stream meander sequence by resolving problematic LWD and blockages. This section between Clarkin Road and Peter's Road is the most ideal habitat for salmon on Quinn's Brook and should be a targeted focus to eventually have salmon return to this area. The Fish Friends Program with Bluefield High School raises juvenile salmon in a classroom setting then has the students release the salmon back into streams. Bluefield releases the salmon fry into Quinn's Brook below Carragher's Pond and electrofish surveys have indicated that the salmon are indeed surviving. If this program continues salmon may eventually return to section to spawn and a local population may become self-sustaining.

The last remaining section proceeds above Peter's Road and contains Carragher's Pond and the headwater region of Quinn's Brook. Carragher's Pond plays an important role in protecting downstream habitat from sedimentation and also providing recreational angling opportunities. The Mill Road sediment trap should also be maintained. Mill Road is a known chronic source of sediment input and DTIE has been advised on several occasions about the current issues and actions occurred in 2021 to begin resolving these issues. The headwater region is not a significantly important area for salmon but historically was important for brook trout spawning and should be maintained for such reasons.

### **Recommendations**

The following are objectives and goals for future improvement of habitat components for Quinn's Brook:

- On an annual basis survey for salmon redds (mainly below Carragher's Pond)
- Continue monitoring electrofishing index sites below Carragher's Pond
- Maintain 6 km of stream connectivity by ensuring the migratory corridor from sea to spawning areas remains clear of blockages and beaver activity
- Monitor Mill Rd for sediment runoff and work with DTIE to resolve issues or close the road entirely
- Monitor secondary roads and agricultural fields for sediment input
- Monitor for fish with fungal infection and keep detailed records of # of infected fish, # of dead fish, and # of salmon with fungal infection
- Monitor and re-excavated as needed at Carragher's Pond in-stream sediment trap and Mill Road by-pass pond
- Continue to improve weakened riparian areas by planting native tree/shrub species below/above Clarkin Road
- Continue to work with the Fish Friends Program and stock salmon fry below Carragher's Pond



**Table 5.** Management recommendations for the Brookvale region of the West River

Annual To-Do Checklist	Long Term (5+ years)	Short Term (1-5 years)	Cost/Benefit	Priority
<b>Area: Quinn's Brook</b>				
Redd surveys	X		Low/High	1
Electrofishing index sites (Below Carragher's pond)	X		Low/High	1
Walk section to ensure no barriers to fish passage		X	Low/High	1
Work with DTIE to resolve sediment runoff from Mill rd		X	Low/High	1
Monitor secondary roads and agricultural fields for sediment input		X	Low/High	1
Monitor fungal infection frequency	X		Low/High	2
Monitor and re-excavated as needed at Carragher's Pond in-stream sediment trap and Mill Road by-pass pond	X		High/High	2
Continue improving weakened riparian habitat areas	X		Low/High	2
Englewood Fish Friends program		X	Low/Medium	2
Continue to monitor for and catalog spring seepages and cold water inputs from first order tributaries	X		Low/Medium	2
Mark out areas for migratory pool structures to be installed		X	Low/Medium	2
Installation of cover structures and brushmats in overwidened areas		X	Low/Medium	2

## 6.5 Green Bay

The Green Bay area of the West River is located in the midst of the main branch nestled between Brookvale and Riverdale and contains ~5.5 km of the stream channel. The distinguishing feature between Riverdale and Green Bay is the riparian habitat. Green Bay is early successional and dominated by alder growth. CQWF began restoring this section in 2016 (1.3 km below Green Bay culvert) and 2017 (4.2 km above Green Bay culvert along Eliot River Road). Since 2017 CQWF has made the following achievements:

- Restored 5.5 km of stream channel (lower Green Bay promoted as canoe route)
- Installed 20 large brush mats

- Planted ~750 trees at +35 alder patch cuts
- Installed 10 cover structures
- Monitor salmonid spawning activity during November/December
- Monitor salmonid densities at electrofishing index site at Cudmore's property

Major limiting factors that threaten Atlantic salmon populations in the Green Bay region include the following:

- excessive sediment bedload reducing juvenile rearing and spawning habitat quality
- lack of riffle habitat with coarse substrate and ideal spawning substrate
- early successional forest and alder dominant landscape
- prior to restoration activities, the entire stream channel was congested with dense alder growth

### **Habitat Description**

Below the Green Bay culvert, the stream meander sequence consists of a tight meandering channel that lacks riffle habitat and is mainly run/pool habitat. There is a major problem with excessive sediment and fine substrates. This section is of low priority for salmon habitat restoration as it contains lower habitat quality when compared to the rest of the West River. This section is 1.2 km in length before entering the Riverdale area. However, a year after restoration activities (2017) began in this area 7 salmon redds were detected proving this area has the potential to support local populations of salmon if restoration continues.

Proceeding above the Green Bay culvert the stream follows the Eliot River Road for 4.2 km and contains slightly better salmon habitat qualities than the lower region. The stream meander sequence contains some riffle areas with ideal spawning habitats in certain areas. In 2023, five spawning areas were enhanced just below Cudmores including the addition of ideal spawning substrate and soft engineered flow altering structures. In 2024 two redds were observed on these spawning sites and in 2025 four redds were observed at one of these areas. In 2025 this area was fully surveyed for salmon redds and 15 salmon redds were recorded. Since the restoration process has only begun recently this section has the potential to support local salmon populations and will continue to improve as the excessive sediment bedload is addressed. This area also contains a weakened riparian area with early successional forest and dense alder growth. CQWF has started alder patch cuts plantations in two locations along this section and will continue to do so. Stream clearing is intermittently conducted throughout this section however this section has work planned out to be completed during the 2026 field season to help address sediment build up and promote sediment flushing while ensuring the migratory corridor is upheld to reaches of the West river further upstream.

### **Recommendations**

- On an annual basis survey for redds to monitor areas that are repeatedly used for spawning and use the information for future enhancement activities
- Monitor salmonid densities at electrofishing index site at Cudmore's property
- Maintain 5.5 km of stream connectivity by ensuring the migratory corridor from sea to spawning areas remains clear of blockages and beaver activity
- Work DTIE to resolve sediment runoff from Mckenna Road into Gass' Brook
- Monitor secondary roads and agricultural fields for sediment input

- Monitor for fish with fungal infection and keep detailed records of # of infected fish, # of dead fish, and # of salmon with fungal infection
- Continue improving stream meander function by monitoring problematic LWD, alder growth and installing brush mats to narrow over widened sections
- Enhance riparian habitat in alder dominated areas by creating alder patch cut plantations and planting of native tree/shrub species

**Table 6.** Management recommendations for the Green Bay region of the West River

Annual To-Do Checklist	Long Term (5+ years)	Short Term (1-5 years)	Cost/Benefit	Priority
<b>Area: Green Bay</b>				
Redd surveys	X		Low/High	1
Electrofishing index sites	X		Low/High	1
Walk section to ensure no barriers to fish passage	X		Low/High	1
Work with DTIE to resolve sediment runoff from Currie Rd		X	Low/High	1
Monitor secondary roads and agricultural fields for sediment input (Currie Rd)		X	Low/High	1
Monitor fungal infection frequency	X		Low/High	2
Instal brush mats to narrow over widened sections		X	Low/High	2
Conduct stream maintenance in section of river spanning from Cudmores to Green Bay culvert		X	Low/High	2
Continue improving weakened riparian habitat areas	X		Low/High	2
Create new plantations in section above Green bay culvert to help expedite riparian succession	X		Low/High	2
Strategic management of Coarse woody materials through Cudmore's to Green Bay Culvert (Cover logs, Brush mats)	X		Low/High	2
Survey area for areas to improve / create migratory holding areas (Pool creation structures / Flow altering structures)		X	Low/Medium	2

## 6.6 Gass' Brook

Gass' Brook is situated in the stretch of river between Cudmores and Green Bay. There is no historical records of salmon inhabiting this brook. However, the section of river this tributary is situated in has a local population of salmon in it that has had restoration work undertaken. While the lower section of Gass' brook contains early successional species throughout the riparian habitat a noted change can be observed the further up the tributary with a riparian habitat that contains longer lived species as opposed to the alder dominated section at the start of this stretch of river.

Some of the work undertaken by CQWF on this tributary so far includes:

- 500m of maintained stream and a goal to work up to 1.6km of stream to be maintained on an annual basis
- Surveys for spawning activity carried out during spawning season (2025 onwards)
- Improved riparian habitat (over +200 trees in +10 alder patch cuts)
- Four HSI sites established in 2025
- Monitor salmonid densities via electrofishing at two index sites established in 2025

Major limiting factors that threaten local Atlantic salmon populations in Gass' Brook include:

- Sedimentation reducing juvenile rearing habitat and spawning habitat (Mckenna Rd and agricultural fields in lower sections)
- Certain areas with agricultural fields in close proximity have lower quality Riparian habitats and margins that could be improved upon through plantations
- Excessive alder growth into stream channel hindering sediment flushing throughout this section.

### **Habitat Description**

Gass' Brook is situated in the Cudmores to Greenbay section of the West River, the mouth of Black brook is situated in the middle of this section. Gass' Brook can be broken up into two sections of stream the lowest section from the mouth to the first fork roughly 1.6km from the mouth. The second section continues from the forks all the way to the headwaters of Gass' Brook just beyond Mckenna Rd. This tributary is relatively healthy in terms of its riparian margin due to the remote area where most of the brook travels through. A stark contrast can be observed through as the brook travels through the area closest to the Eliot River road riparian composition is mainly alders and early successional species. The further upstream you get the composition changes to a more mixed composition of later successional species directly correlating to the land use of each of the described sections. Black Brook has very little identified sources of sediment along it which gives promise as it could provide valuable spawning habitat for salmonids within the West River once a flow is reestablished.

The first section of Gass' Brook contains a much earlier succession of riparian species containing shorter lived species such as White birch, White spruce & a predominant section of alders where the stream travels close by to the adjacent agricultural fields. This section is approximately 1.6km until the smaller tributary meets it, this is also where a large transition occurs in the canopy composition of the river changes to later successional species in the riparian area. This section has two electro fishing sites and four HSI sites that were established in 2025 which will continue to be monitored annually to see if there is an observed changes to the river and salmonid densities following restoration work being undertaken. Notable characteristics of this section of stream was a large amount of fine sediment within this bottom section as no work had been undertaken so far throughout this section of stream, and was congested with alders and deadfall throughout this section of stream holding up the natural flushing of sediment. Restoration work undertaken during the 2025 field season should aid in restoring a natural sediment flushing throughout this section of the river in areas with heavy sedimentation. Substrate in this section is mostly smaller cobble substrate throughout this sections with small areas of shale dominated sections

The second section of Gass' Brook begins at the forks in the brook with the main branch of Gass' brook heading north towards Mckenna Road. This area starts approximately 1.6km upstream from the

mouth of Gass' Brook and continues another ~2km to the crossing at Mckenna Road. This section of stream is relatively undisturbed in terms of human impact as it travels further into areas with very little human development and agricultural impacts on the surrounding land. The riparian area throughout this section transitions from early successional species and excessive alder growth to a more mature riparian habitat showcasing the potential this stream may hold to be a viable nursery habitat for salmonids. Substrate throughout this section is mainly gravel sized substrate. This section has not been worked on yet so a lot of this section holds legacy blowdown and obstructions which leads to many areas of multiple braids. While this section is relatively narrow it could hold potential to support salmonids if extensive planning and targeted approaches were taken and be transformed into high value nursery habitat to local salmonids which inhabit Gass' Brook currently.

## Recommendations

The following are objectives and goals for future improvement of habitat components for Brookvale:

- On an annual basis survey for redds to monitor areas that are repeatedly used for spawning and use information for future enhancement activities
- Continue monitoring two electrofishing index sites established in 2025
- Maintain 1.6 km of stream connectivity by ensuring the migratory corridor from sea to spawning areas remains clear of blockages and beaver activity
- Work with DTIE to resolve sediment runoff from Mckenna rd
- Monitor secondary roads and agricultural fields for sediment input
- Monitor for fish with fungal infection and keep detailed records of # of infected fish, # of dead fish, and # of salmon with fungal infection
- Continue to improve juvenile rearing habitat in riffle/run areas below important spawning areas
- Continue to conduct HSI surveys at established areas in lower section of Gass' brook to monitor effectiveness of restoration work and to observe changes following restoration work
- Continue improving weakened riparian habitat areas by planting native hardwood trees and shrub species (creating alder patch cuts, planting alongside agriculture fields, expanding buffer zones).

**Table 4.** Management recommendations for the Brookvale region of the West River

Annual To-Do Checklist	Long Term (5+ years)	Short Term (1-5 years)	Cost/Benefit	Priority
<b>Area: Gass' Brook</b>				
Redd surveys	X		Low/High	1
Electrofishing index sites (two established in 2025)	X		Low/High	1
Walk section to ensure no barriers to fish passage		X	Low/High	1
Work with DTIE to resolve sediment runoff from Mckenna Rd		X	Low/High	1

Monitor secondary roads and agricultural fields for sediment input		X	Low/High	1
Addition of preferred substrate to spawning areas where shale/flat rock is dominant		X	Low/Medium	2
Continue HSI surveys at 4 established HSI sites to gather information on observed changes following restoration	X		Low/Medium	2
Install structures to create / improve holding pools for local salmonid populations		X	Low/Medium	2
Monitor fungal infection frequency	X		Low/High	2
Increase / Improve Juvenile rearing habitat		X	Low/High	2
Continue to monitor for and catalog spring seepages and cold water inputs from first order tributaries	X		Low/Medium	2
Continue stream enhancement work and get to 1.6km of stream maintained annually		X	Low/High	2
Strategic management of Coarse woody materials through lower 1.6km of Gass' Brook (Cover logs, Brush mats)	X		Low/High	2
Survey area for areas to improve / create migratory holding areas (Pool creation structures / Flow altering structures)		X	Low/Medium	2
Continue improving weakened riparian habitat areas	X		Low/High	2

Workplan Checklist for all sites:

[https://docs.google.com/spreadsheets/d/1-5ZoT856WoO5-LyXYZ-tVktzRYeogL\\_cPMI-rka7Eso/edit?usp=sharing](https://docs.google.com/spreadsheets/d/1-5ZoT856WoO5-LyXYZ-tVktzRYeogL_cPMI-rka7Eso/edit?usp=sharing)

## 7.0 Potential Sources of Funding for Atlantic salmon projects:

- FCAS (<https://www.salmonconservation.ca/> )
- HSP (<https://www.dfo-mpo.gc.ca/species-especies/sara-lep/hsp-pih/index-eng.html> )
- WCF (<https://www.peiwcf.ca/> )
- WMF  
(<https://www.princeedwardisland.ca/en/information/environment-water-and-climate-change/watershed-management-fund> )
- Canada Nature Fund for Aquatic Species at Risk  
(<https://www.canada.ca/en/fisheries-oceans/news/2020/11/canada-nature-fund-for-aquatic-species-at-risk-projects-in-atlantic-provinces.html> ).

## 8.0 References/Technical documents

Visit: [https://peiwatershedalliance.org/?page\\_id=26319](https://peiwatershedalliance.org/?page_id=26319) to find the following documents:

- West River WMP
- Watershed Technical Manual
- 2019 renewed conservation strategy
- Native Plants and Watersheds: A Natural Combination

Canada, Department of Fisheries and Oceans. (n.d.). *Atlantic Salmon Integrated Management Plan 2008-2012 Gulf Region* (<https://waves-vagues.dfo-mpo.gc.ca/Library/332473e.pdf> ).

Leblanc-Poirier, N., Comeau, C., & Maillet, M. (2014, February). Stewardship Plan to Protect and Restore the Atlantic Salmon (*Salmo salar*) Habitat in the Cocagne River. Retrieved December 22, 2020, from <https://ecopaysdecocagne.ca/images/publications-bassin-versant/salmon-habtiat-cocagne.pdf>

<https://indigenoustourism.ca/regions/prince-edward-island/>

9.0 Appendix

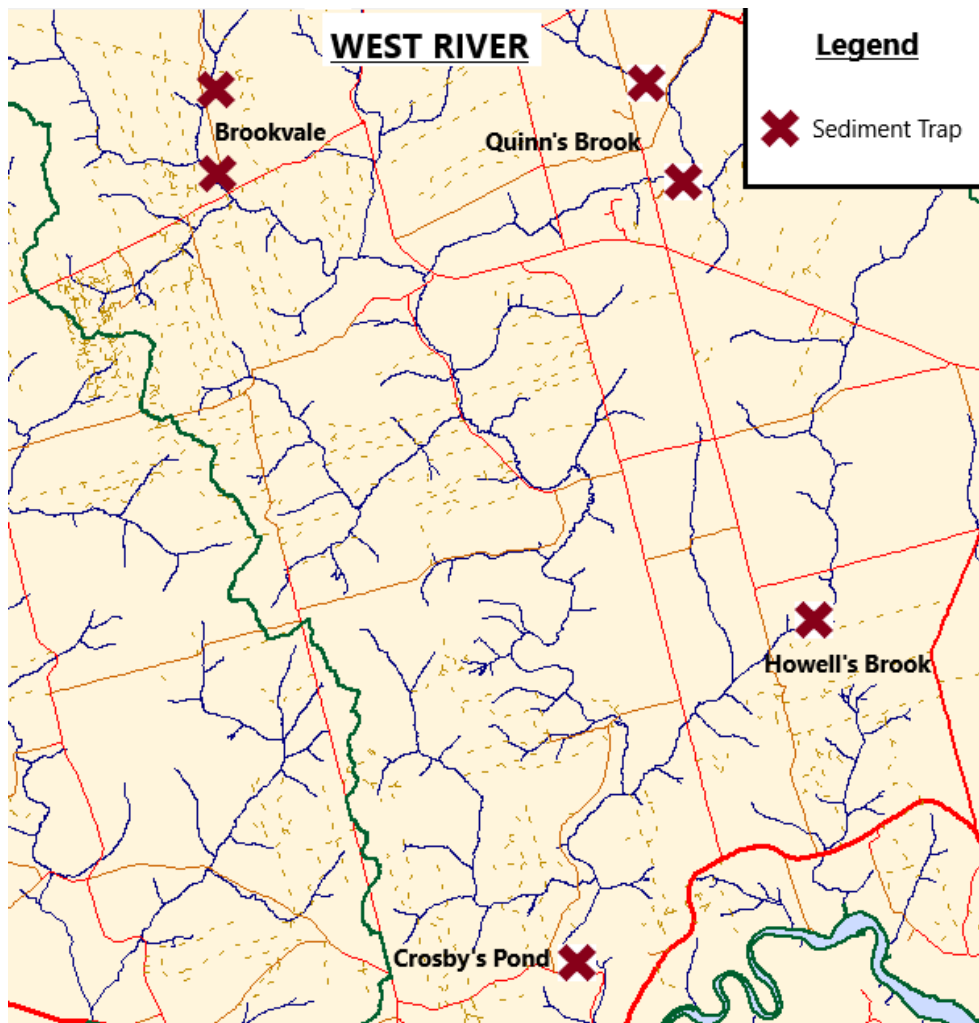
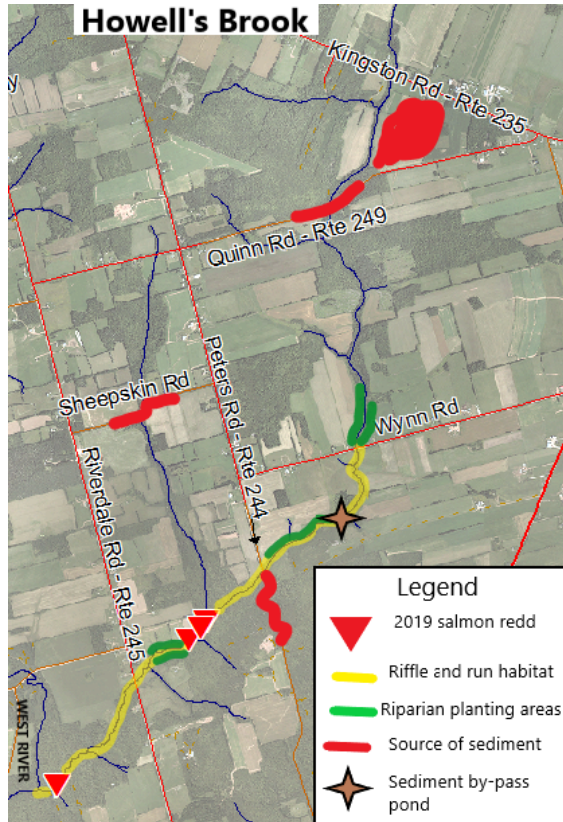


Figure 8. Sediment traps locations on the West River





**Map 6.** Howell's Brook identified habitat areas along with 2019 Atlantic salmon redds, riparian planted areas, sediment by-pass pond and sources of sediment also highlighted.